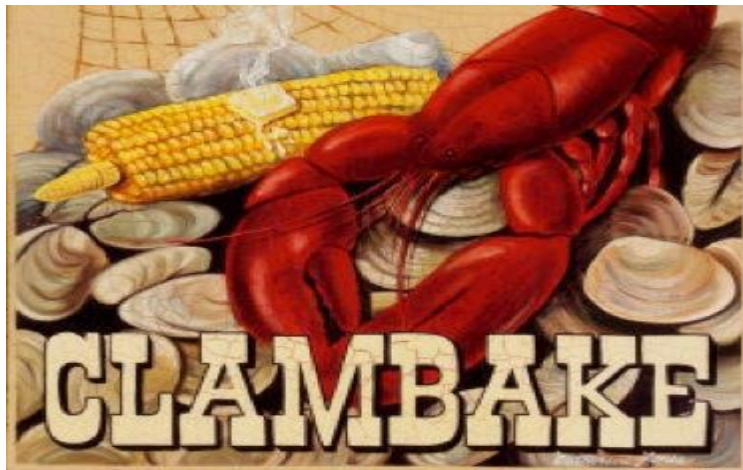


# New England Pot style Clambake

EACH GUEST'S ENTRÉE MUST BE PRE-ORDERED



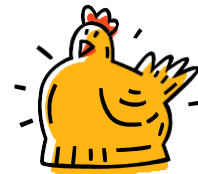
## Entrée



**OR**



**OR**



**1 ¼ lb. Boiled Lobster**

**Bourbon Steak Tips**

**BBQ Grilled Chicken**

**Or**

**NY Strip Steak**

**Or**

**T-Bone Steak**

EACH GUEST'S ENTRÉE MUST BE PRE-ORDERED

## **Cristo's Clambake Sides**



**Steamed Clams & Mussels in  
a Garlic Butter Sauce**

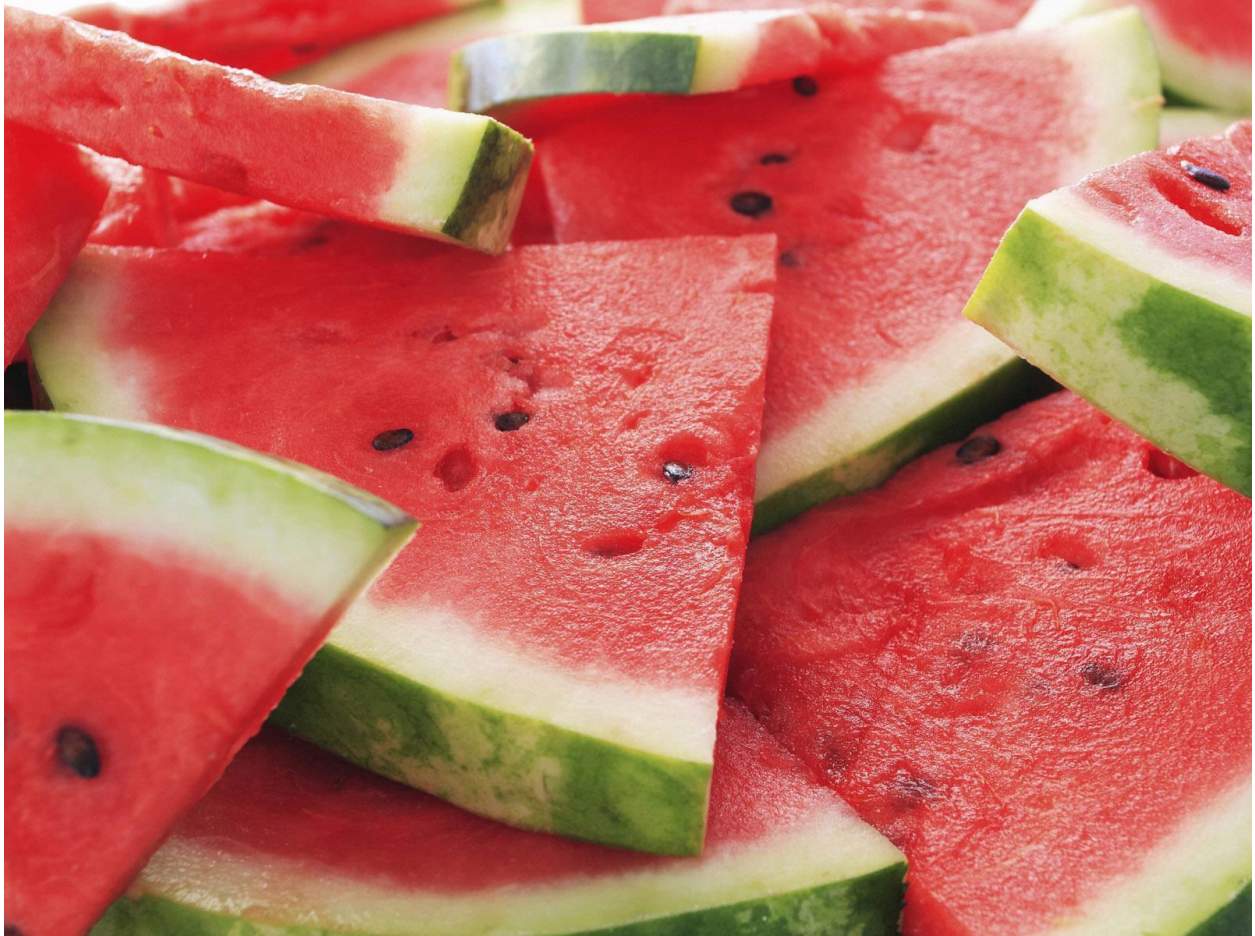
**New England Clam Chowder**



**Corn on the Cob**

**Red Potato Bliss Salad**





**Watermelon Slices**